

Historic, archived document

Do not assume content reflects current scientific knowledge, policies, or practices.

62,61

POMONA UNITED NURSERIES



PINK FLOWERING ALMOND



ROSE TREE OF CHINA (PRUNUS TRILOBA)

Spring
1934

Fall
1934



HYDRANGEA, P. G.



BUTTERFLYBUSH (BUDDLEIA)



JAPAN QUINCE (CYDONIA)

SHRUBS • ROSES • TREES • EVERGREENS • FRUITS

DANSVILLE, *New York*

**The Special Cash Discount offered will in most cases
more than pay transportation charges**

10% • CASH DISCOUNT • 10%

If your order is received on or before
April 10, 1934, for Spring shipment
October 15, 1934, for Fall shipment

We allow the above discount if cash is sent with order. After these dates 5%
discount will be allowed

POMONA SHIP C. O. D.

We understand that it is not always convenient for all to send cash with order, please do not put off ordering on account of this. We require no cash with order, but will ship C. O. D. with the understanding that you pay the mailman, expressman or freight agent promptly upon arrival. We were the first nursery-men to ship without requiring some cash with order.

No Cash Discount Allowed When Shipped C. O. D.

Order Trees Early

Wherever you live it pays to order early. Send in your order just as soon as you know what you want. POMONA METHOD OF SHIPPING C. O. D., requiring no cash with order makes it convenient for you to do this, and we want you to get your trees and plant them as soon as weather conditions and the preparation of your land will permit, either Spring or Fall.

Our Shipping Season

WE PACK AND SHIP ALL WINTER TO SOUTHERN STATES. Our regular Spring packing and shipping season usually opens here February 1st and continues into the month of May. The planting season is not regulated by any particular month or day, nor by the state of vegetation where the planting is to be done, but BY THE CONDITION OF THE TREES TO BE PLANTED. Hence, trees can be sent with safety from Dansville, N. Y., to localities several degrees south, even if they do not arrive until the ordinary transplanting season in that locality is past.

EXPRESS RATES REDUCED 25 PER CENT

RAILWAY EXPRESS AGENCY
INCORPORATED

Dansville, N. Y., June 8, 1933.

To Whom It May Concern:

This is to advise that, effective June 15, 1933, the rates on shipments of Nursery Stock have been reduced to second class.

This is a reduction of 25 per cent of the present rates.

J. L. BALDWIN, Agent.

POMONA UNITED NURSERIES
Dansville, New York

C. W. McNair

F. W. Wells

TO OUR FRIENDS AND PATRONS:

In presenting you with this, our Annual Catalog, we wish to thank our many patrons for the liberal patronage extended to us in the past, and assure them that all orders intrusted to us in the future will have the same careful attention as heretofore.

Honest treatment of our customers is the foundation of our business. If you have never done business with us, ask your neighbor about us, he doubtless has, and we are willing that he should say whether or not we are what we claim to be. Business cannot be successfully carried on for a term of years without the confidence and good will of the people who are its patrons.

The fact that we guarantee our stock to be absolutely correct, leaves no possible chance for you to make a mistake in buying from us. We say to you, no matter what you buy, if it fails to come up to your expectations or differs from our description, or is not in every way as represented, we will make it satisfactory. All you need to do is to write us upon receipt of shipment, what is wrong, and we will promise you quick correction.

No one plants for one year. It's an investment for a life time and future generations. Do not, therefore, let a cheap price influence your selection. It takes too long to reap a full harvest of planting. Think of your disgust to find later that your cheap trees really look cheap. We sell direct to you, without paying any agent's commission, and guarantee that our price is absolutely the lowest for quality.

There is one thing, however, which we must remember in selling direct to the planter, whether we ship by freight, express or mail, and that is that the quality of our stock is all that we claim for it, remembering that the stock we ship is our salesman. We do not ship to any distant customer anything which we would not want shipped to us. In other words, we treat our customers as we would wish to be treated.

Our C. O. D. offer enables you to take advantage of ordering now. Yesterday is gone, forget it. Today is here, use it. Never leave till tomorrow what you can do today.

Very truly yours,

POMONA UNITED NURSERIES,

C. W. McNair,

F. W. Wells.

Flowering Shrubs



BUTTERFLYBUSH

BUTTERFLYBUSH. Seems to attract butterflies in large numbers. It produces long, graceful stems which terminate in tapering panicles of beautiful, lilac-colored flowers that are of miniature size and borne by the hundreds on a flower head which is often 10 in. long.

ALTHAEA, Double Flowering (Rose-of-Sharon). One of the most showy flowering shrubs. Strong, erect growing, with large, bell-shaped, double flowers of striking color, borne abundantly in August and September.

Double Purple Althaea (Purpurea florepleno).

Double Red Althaea (Rubra florepleno).

Double White Althaea (Alba florepleno).

BEAUTYBUSH. A lovely, graceful shrub, covered early in May with the utmost profusion of bloom. Clear pink with brownish spots and veins.

CALYCANTHUS (Sweet-scented Shrub). Flowers purple, very double and deliciously fragrant. Remains in bloom for a long time.

CURRENT, Indian. A slender branched upright shrub valuable for planting in shady places, as the foliage is very persistent. The fruit is purplish red.

DEUTZIA. This valuable species of plants comes to us from Japan. Their hardiness, luxuriant foliage and profusion of attractive flowers, render them deservedly among the most popular of flowering shrubs. The flowers are produced in June in racemes 4 to 6 in. long.

Deutzia, Doubleflowering (Crenata). Flowers double white, tinged with rose. One of the most desirable flowering shrubs in cultivation.

Deutzia, Pride of Rochester. A new variety raised from *Deutzia crenata*, and exceeding all others in size of flowers, length of panicles, profuseness of bloom and vigorous habit. A charming acquisition to the list of Deutzias.

Deutzia, Slender Branched (Gracilis). A charming variety introduced by Dr. Siebold. Flowers pure white and so delicate that they are very desirable for decorative purposes.

DOGWOOD (*Cornus alba*). Its blood red bark in Winter is very conspicuous with its light blue berries. In early Summer it is a mass of exquisite white flowers, contrasting beautifully with red twigs.

ELDER, Golden. Bright yellow foliage, which affords pretty contrast with other shrubs.



WEIGELA EVA RATHKE

PRICE FOR ALL SHRUBS LISTED ON THIS PAGE

Strong, 2 yr. bushes, 2 ft. and up, 25c. each, 10 for \$2.00

If Shrubs are ordered by mail, add 3c. to each shrub to cover cost of mailing

10 per cent Cash Discount; this will in most cases more than pay transportation charges

FORSYTHIA, Golden Bell. Their bright, golden masses of glinting yellow appears before the leaves and are welcome harbingers of Spring.

HONEYSUCKLE, Tatarian. A rapid grower. Makes a wonderful showing the first season. Fragrant, pink flowers in May and June, followed by a wealth of orange red berries.

HYDRANGEA, Hardy Bush (*Paniculata grandiflora*). We urge our friends to plant the Hydrangea. Plant it for the following reasons: It is hardy, enduring the severest Winters outdoors without protection. It is easily transplanted, not one in a thousand dying. *It never fails to blossom the first year planted*; no matter how small the plant, it immediately buds out in great profusion of flowers. When the specimens first open they are greenish white, later they turn to a pure white and still later to a delicate pink.

Hydrangea arborescens grandiflora alba (Hills of Snow). This hardy American shrub is the very finest addition to this class of plants found in many a year. The blooms are of the very largest size, of pure snow white.

LILACS. Best beloved of all the old time garden shrubs whose flowers never fail to charm with their delicate beauty or refresh the soul with their fragrance.



HYDRANGEA PANICULATA GRANDIFLORA

Lilac, Purple. The well known variety. One of the best. A good grower; flowers and young wood fragrant. Purple.

Lilac, White. A very desirable contrast to the purple; those who have one should have the other.

QUINCE, Japan Scarlet (*Cydonia*). Has bright scarlet crimson flowers in great profusion, early Spring. One of the best hardy shrubs; makes a beautiful ornamental hedge.

SNOWBALL. Flowers white, in clusters. Very attractive when in bloom. May to June.

SNOWBERRY. An old time shrub. Produces clusters of pure white berries which remain nearly all Winter.

SPIRAEA, Anthony Waterer. This beautiful variety has the same habits as its parent the Bumalda. It blooms about the close of June, continuing throughout the entire season. It is useful for edging, planting in masses, or as a single specimen where a low, bushy shrub is required. 12 to 18 in.

Spiraea callosa alba. A white-flowering variety of dwarf habit; very fine; remains in flower all Summer. 12 to 18 in.

Spiraea prunifolia (Bridalwreath). Very double, showy, pure white flowers.

Spiraea thunbergi (Thunberg's Spirea.) Of dwarf habit and rounded, graceful form; branches slender and somewhat drooping; foliage narrow.



BLOSSOMS OF JAPAN SCARLET QUINCE (CYDONIA)

PRICE OF ALL SHRUBS LISTED ON THIS PAGE

Strong, 2 yr. bushes, 2 ft. and up, 25c. each, 10 for \$2.00

If Shrubs are ordered by mail, add 3c. to each shrub to cover cost of mailing

10 per cent Cash Discount; this will in most cases more than pay transportation charges

Price for all Shrubs listed on this page: Strong 2 yr. bushes, 2 ft. and up (unless otherwise noted), 25c. each, 10 for \$2.00

If Shrubs are ordered by mail, add 3c. to each Shrub to cover cost of mailing



SPIRAEA VANHOUTTEI MAKES A BEAUTIFUL HEDGE

SPIRAEA vanhouttei. Better known and more largely planted than any other shrub. An extremely graceful shrub with long, drooping branches completely covered with flat clusters of white flowers in May and June. When in blossom a hedge of Spiraea vanhouttei is a sight long to be remembered. Cannot be too highly recommended.

SYRINGA, European Fragrant or "Mock-orange" (*Philadelphus coronarius*). A well known, very hardy shrub, with showy white flowers which are very fragrant.

Syringa, Goldenleaved (*P. foliis aureis*). A beautiful new variety with bright yellow foliage, which affords pretty contrasts with other shrubs, especially with the purple-leaved variety.

WEIGELA rosea (Rose-colored Weigela). An elegant shrub, with fine, rose-colored flowers; of erect, compact growth. Blossoms in June.

Weigela, Variegatedleaved (Fol. variegated). Leaves bordered with yellowish white, finely marked, flowers bright pink.

Weigela floribunda (Crimson Weigela). The flowers are dark crimson, with white stamens projecting from them, reminding one somewhat of Fuchsia flowers. It blooms in the Spring with other Weigelas.

Weigela, Eva Rathke. Flowers brilliant crimson; beautiful, distinct, clear shade.

Select Varieties of Hedge Plants

BARBERRY, Redleaved. Similar to the green leaf Barberry, which is so popular for mixing in the shrubbery border as single specimens or for planting in clumps on the lawn. Foliage is of rich, lustrous, bronzy red equal to the richest Red Japanese Maples. 2 yr. strong plants.

Size	Each	10	100	Size	Each	10	100
12 to 15 in.....	\$0.25	\$2.50	\$20.00	15 to 18 in.....	\$0.35	\$3.00	\$35.00

Barberry thunbergi (dwarf). From Japan. A beautiful shrub of dwarf habit, not growing more than 3 ft. high; covered with yellow flowers, followed by scarlet fruits on long stems that last nearly all Winter. The foliage is dense, green, changing to a coppery red in Autumn.

Size	Each	10	100
2 yr., 12 to 18 in....	\$0.20	\$1.75	\$12.00
2 yr., 18 to 24 in....	.25	2.00	17.00

PRIVET, California. One of the leading hedge plants and undoubtedly the most largely planted of them all; its foliage produces abundantly the deepest, richest green, almost an evergreen; does not shed its foliage until late Winter and then only in an exposed position.

Size	10	100	1000
12 to 18 in.....	\$0.50	\$3.00	\$25.00
18 to 24 in.....	.75	4.50	35.00
2 to 3 ft.....	1.00	5.00	45.00



CALIFORNIA PRIVET HEDGE

Hardy Field-Grown Roses

Everblooming Hybrid Teas

Columbia. Glowing pink. Strong grower. Very free flowering. Almost thornless.

Gruss an Teplitz. Scarlet shading to crimson. Very fragrant. Profuse bloomer.

Killarney Pink. Flesh pink shaded with white and suffused pale pink.

Killarney White. Pure white. Long pointed buds. Very fragrant.

Lady Ashtown. Deep carmine pink shading to yellow at base of petals.

La France. Fine Peach-blossom pink. Large flowers of unusual fragrance.

Los Angeles. Flame pink shaded with gold at base of petals. Flowers large.

Mme. Butterfly. Bright pink, apricot and gold. Large, perfect bloomer.

Pink Radiance. Bright carmine rose with opal and coppery reflections.

Premier. Rich dark pink. Beautifully formed, fragrant flowers.

Red Radiance. Deep red. Very fragrant. Vigorous grower. Unusually hardy.

Sunburst. Light sulphur yellow. Strong, spreading grower.

Hybrid Perpetual or June Roses

American Beauty. Very large and double. Of globular shape. Deep pink, shaded with carmine. Fragrance exquisite.

Anne de Diesbach. Very large; brilliant crimson; fragrant, vigorous.

Clio. New. The perfection in Hybrid Perpetuals. Of delicate satin blush with a little deeper center. Large, well shaped and very double. Strong, robust, hardy.

Crimson Rambler. A climbing Rose of unusual attractions. Very hardy, having withstood 10 deg. below zero without covering.

Dorothy Perkins. Climbing Rose. Full, double, shell pink flowers in large clusters. Very attractive.

Frau Karl Druschki (Snow Queen). A new Rose of great merit. There is nothing in white Roses quite as fine as this. Pure white, large and of elegant form.

Magna Charta. Pink and carmine; very large and full; a profuse bloomer. Fragrant. Free grower.

Mrs. John Laing. Very free flowering; commences early and continues to bloom profusely until Fall. Color delicate pink.

Paul Neyron. The largest of all. Deep rose color. A free bloomer and vigorous grower.

Red Baby Rambler. A dwarf (bush) form of Crimson Rambler, and furthermore, ever-blooming. Will bloom continuously throughout the Summer.



RED RADIANCE ROSE



FRAU KARL DRUSCHKI

PRICE FOR ALL VARIETIES OF ROSE BUSHES ON THIS PAGE

Strong, 2 yr. bushes, 50c. each, 10 for \$4.00

If sent by mail, add 3c. each to cover cost of mailing

Shade and Ornamental Trees

ALMOND, Doubleflowering. Early Spring flowering shrub in full bloom before it leaves out, with beautiful showy flowers of double pink and double white. State color desired.

	Each	10
1½ to 2 ft.....	\$0.50	\$4.50
2 to 3 ft.....	.65	5.50

ASH, Mountain, American. White flowers in June, followed by very attractive, scarlet berries that hang until late in Fall.

	Each	10
6 to 8 ft.....	\$1.50	\$12.50
8 to 10 ft.....	2.00	15.00
10 to 12 ft.....	3.50	25.00

BIRCH, Cutleaf, Weeping. White bark, drooping branches; finely cut foliage.

	Each	10
4 to 5 ft.....	\$1.40	
5 to 6 ft.....	1.75	

CATALPA bungei (Umbrella-tree). Perfectly hardy and flourishes in almost all soils and climates with an umbrella-shaped top without pruning.

Price: Catalpa bungei, 2 yr. heads

	Each	10
4 to 5 ft. trees.....	\$0.75	\$6.95
5 to 6 ft. trees.....	.95	8.95
6 to 8 ft. trees.....	1.15	9.95

CRAB, Bechtel's Doubleflowering. One of the most beautiful of the Flowering Crabs; tree of medium size, covered in early Spring with large, beautiful fragrant flowers of a delicate pink color.

	Each	10
3 to 4 ft.....	\$0.75	\$6.50



CATALPA BUNGEI

ELM, American. A noble native tree of great size and wide spread, with graceful, drooping branches and handsome leaves. One of the best tree types for towering, heady effect and widespread shade, in the yard itself. Indispensable to shaded parks, and largely used along the sides of wide avenues.

	Each	10
6 to 8 ft.....	\$1.00	\$9.00
8 to 10 ft.....	1.50	12.50
10 to 12 ft.....	2.00	17.50

ELM, Chinese (Pumila). A recently developed type specially adapted to the arid regions of our West and Southwest. There it thrives under natural adversity, growing very rapidly and to a good height. In the East and the Lake regions, its growth is so deliberate we may well consider it as a dwarf variety. The foliage is small and dense, the growth symmetrical and compact.

	Each	10
5 to 6 ft.....	\$1.25	
6 to 8 ft.....	1.75	
8 to 10 ft.....	2.25	

MAPLE, Ashleaf. Fast growing, of spreading habit. Leaves light green.

	Each	10
6 to 8 ft.....	\$1.00	\$7.50
8 to 10 ft.....	1.25	10.00



STREET PLANTING OF NORWAY MAPLES

SHADE AND ORNAMENTAL TREES—Continued



TEA'S WEEPING MULBERRY

POPLAR, Carolina. A remarkably rapid, luxuriant grower. Very large leaves, very glossy deep green. Has the advantage over other shade trees in that it will grow in any kind of soil and will thrive in places where others will fail to live. Each 10 100

5 to 6 ft.....	\$0.40	\$3.50	\$25.00
6 to 8 ft.....	.65	6.00	35.00
8 to 10 ft.....	.75	7.00	50.00

Poplar, Lombardy. This is an old favorite. Well known and remarkable for its erect rapid growth and tall, spiral form. Indispensable in landscape gardening, to break the ordinary and monotonous outlines of most other trees. Each 10 100

5 to 6 ft.....	\$0.45	\$4.00	\$20.00
6 to 8 ft.....	.70	6.50	35.00
8 to 10 ft.....	1.00	9.00	65.00

PRUNUS pissardi (Purpleleaf Plum). The finest purple leaf, small tree or shrub. Each 10

4 to 6 feet.....	\$0.50	\$4.50
------------------	--------	--------

Rose Tree of China
(*Prunus triloba*)

The Rose Tree of China is the most beautiful and showy of all small trees. It begins to bloom before the leaves appear in the Spring, being literally covered with very double, roselike pink flowers. As an ornament from early Spring until late Fall it has few equals. Grows usually to a height of but 8 ft. It is hardy and easily grown and no lawn is so small that room cannot be found for at least one of these wonderful trees. Each 10

3 to 4 ft. trees.....	\$0.50	\$4.50
2 to 3 ft. trees.....	.40	3.50

If ordered by mail, add 3c. to each tree

MAPLE, Norway. Round-headed tree with dark green foliage. Largely used for street and shade. Each 10

6 to 8 ft.....	\$1.00	\$9.50
8 to 10 ft.....	1.50	12.50
10 to 12 ft.....	2.00	17.50

Maple, Schwedleri Redleaf. With beautiful foliage which attracts attention at all seasons. Their gleaming red and purple contrasts brightly with the delicate green of other trees. Each

6 to 8 ft.....	\$2.00
8 to 10 ft.....	2.50

Maple, Silverleaf. A rapid growing Maple of spreading habits; excellent for sandy soil. Foliage silvery on under side. Each 10

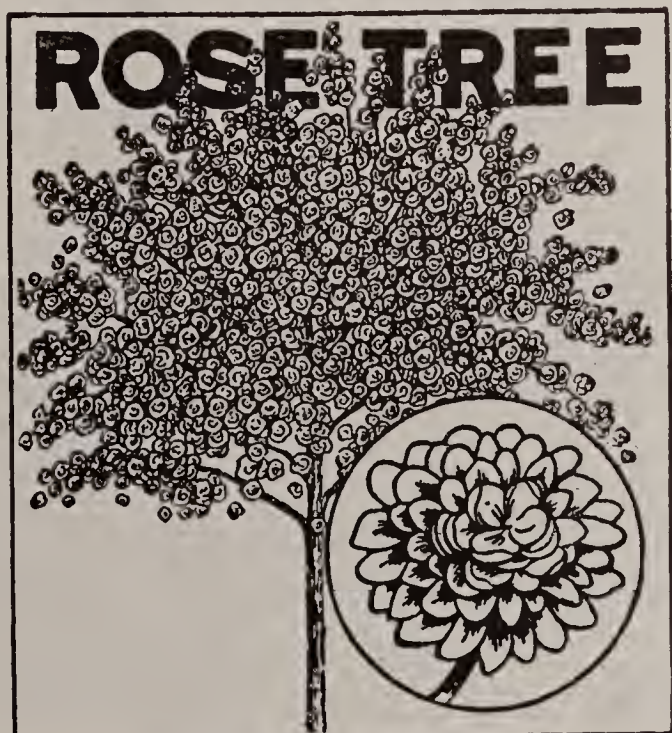
4 to 6 ft.....	\$0.50	\$4.50
6 to 8 ft.....	.75	6.50
8 to 10 ft.....	1.00	9.50

Maple, Sugar, Hard. Straight and spreading, dark green leaves turning to scarlet in the Autumn. Each 10

6 to 8 ft.....	\$1.50	\$12.50
8 to 10 ft.....	2.00

MULBERRY, Tea's Weeping. Slender, vinelike branches that droop to the ground. Glossy, dark green foliage—a favorite for specimen use on small lawns. Each

5 to 6 ft.....	\$1.25
----------------	--------



ROSE TREE OF CHINA

Pomona Evergreens at Reduced Prices

EVERGREENS

Truly the aristocrats of treedom, lending year around beauty to your home surroundings. We have an unusual assortment this season of evergreens in green and silver which make the most attractive combination for planting as a foundation planting in groups or as specimen trees.



IRISH JUNIPER

EVERGREENS AT LOW PRICES

You pay no more for Pomona's supergrade Evergreens all of which are selected individually as to shape and foliage, than you do for second grade stock that is dug up in the nursery row regardless of the development.



PYRAMIDAL ARBORVITAE

ARBORVITAE, American. Much used for hedges, screens, singly on lawns, and in tubs for porches, etc. It is a handsome little tree, and if allowed to grow naturally will be quite tall and pyramid shaped.

	Each	10
15 to 18 in.....	\$0.50	\$4.50
18 to 24 in.....	.75	6.50
2 to 3 ft.....	.95	7.50

ARBORVITAE, Pyramidal. One of the most beautiful varieties, very erect and regular in form, resembling the Irish Juniper.

	Each	10
18 to 24 in.....	\$1.25	\$15.00
2 to 3 ft.....	2.00	18.00

Arborvitae, globosa. Forms a natural globe without any trimming. An excellent dwarf variety.

	Each	10
1½ to 2 ft.....	\$1.75	\$15.00

FIR, Douglasi. Leaves light green above, glaucous below. Conical form, branches spread light and graceful. A rapid grower.

	Each	10
15 to 18 in.....	\$0.50	\$4.50
2 to 3 ft.....	.75	6.50

JUNIPER, Irish. Erect, slender, and formal in habit. Foliage sage green, very compact, making a splendid column, sometimes 12 to 15 ft. high. Much used in cemeteries.

	Each	10
3 to 4 ft.....	\$1.75	\$15.00

Juniper, Pfitzer's. This low, spreading Evergreen of greenish blue is equally satisfactory in the extreme North as well as South, and will survive in shady or sunny exposure.

	Each	10
18 to 24 in.....	\$1.75	\$15.00



AMERICAN ARBORVITAE

All our Evergreens are balled and burlapped, thereby assuring healthy and vigorous growth for all time.

POMONA EVERGREENS, ETC.—Continued

PINE, Mugho. A low, compact grower, stiff leaves of an excellent green color. The new growth closely resembles tiny candlesticks over the entire tree. Each 10
 15 to 18 in.....\$2.00 \$17.50
 18 to 25 in..... 2.75

Pine, Tom Thumb. Small, compact, with feathery foliage. A beautiful ornament for small yard or cemetery lot. For low hedges. Each 10
 15 to 18 in.....\$2.00 \$17.50

SPRUCE, Colorado Blue. Unquestionably the most beautiful of all evergreens, beyond words of description. Its foliage of rich, glistening blue, its stately and symmetrical growth are admired by all. You will be justly proud of having one or more of these beautiful trees on your grounds. Unexcelled for specimen plantings, which will add distinction to your home. Each 10
 15 to 18 in.....\$2.00 \$18.00
 2 to 3 ft..... 2.50
 3 to 4 ft..... 5.00

Spruce, Engelmanni. A splendid evergreen for specimen planting. Conical, pyramidal form, foliage of a blue tint. Resembles Colorado Blue Spruce. Each 10
 2 to 3 ft.....\$1.00 \$9.00

Spruce, Norway. A lofty, elegant tree of perfect pyramidal habit, remarkably elegant and rich. As it gets age, has fine, graceful pendulous branches. It is exceedingly picturesque and beautiful. Very popular and should be largely planted. One of the best evergreens for hedges.

	Each	10
15 to 18 in.....	\$0.45	\$3.50
18 to 24 in.....	.65	6.00
2 to 3 ft.....	.75	7.00
3 to 4 ft.....	1.00	8.50



COLORADO BLUE SPRUCE

Spruce, White. Compact, upright growing, long lived, retaining its branches to the ground. Aromatic, drought-resisting. Varies in color from light green to glaucous blue. Each 10
 18 to 24 in.....\$0.75 \$5.50
 2 to 3 ft..... .85 7.50



PFITZER'S JUNIPER

Cohocton, N. Y.
January 16, 1932

Pomona United Nurseries,
Dansville, N. Y.

Gentlemen: Please find enclosed check for Landscaping, Evergreens and Shrubs which you set out on my place in Cohocton. Everything is very satisfactory and I wish to compliment you on the excellent work which you did for me.

Very truly yours,
G. A. WENTWORTH.

All our Evergreens are balled and burlapped, thereby assuring healthy and vigorous growth for all time

10 per cent Cash Discount; this will in most cases more than pay transportation charges

Apple Trees

While there are many tempting fruits which nearly every person can grow in his field or garden, the Apple has been proclaimed king of all, since it is so healthful, can be so easily grown, and can be used in so many ways. Whereas in old times an Apple orchard of five or ten acres was considered a large planting, now orchards of one hundred, five hundred, eight hundred or a thousand acres are frequently found. Apple growing is now a business, whereas in former years it was simply a small side issue. Those who have good orchard lands, and there are thousands of acres of such lands in almost every township in each state, can devote their land to no more profitable use than by planting orchards. **Our list of varieties embraces a selection of the best.**

POMONA SPECIAL PRICE FOR ALL VARIETIES APPLE TREES

Size	Age	Height	Caliper	Grade	Each	10	100
Largest Size	2 yr.	5-7 ft.	$\frac{3}{4}$ and up	XXX.....	\$0.60	\$4.50	\$32.50
Medium Size	2 yr.	4-5 ft.	$\frac{5}{8}$ - $\frac{3}{4}$	XX55	4.00	27.50
Smaller Size	2 yr.	3-4 ft.	$\frac{1}{2}$ - $\frac{5}{8}$	X50	3.50	22.50
Largest Size	1 yr.	3-5 ft.	XXX.....	.60	4.25	30.00

Mailing Size: First-class small size 3 ft. trees sent postage paid, 33c. each, 10 for \$2.75

DUCHESS OF OLDENBURG. Large, round; streaked red on yellow; tender, juicy, pleasant. A kitchen Apple of best quality and esteemed by many for dessert. Tree a vigorous, fine grower, and an abundant bearer. August and September.

King of Tompkins County. One of the standard varieties grown for commercial purposes. The fruit is of a bright red color, large and uniform. The flesh is yellowish, crisp, tender, juicy and sub-acid, and of the best quality.

YELLOW TRANSPARENT. Medium to large; cream and yellow, tender, juicy, sub-acid fragrant, good flavor. Tree is very hardy, healthy, somewhat of a dwarf grower, bears very young, fine as a filler and one of the few varieties that grow and bear bumper crops. Yellow Transparent is the first commercial Apple on the markets, and ripens when the demand for Summer Apples is extra strong; consequently it always brings the best prices.

GRIMES' GOLDEN. Medium to large size; skin golden yellow, sprinkled with gray dots; flesh crisp, tender, juicy, sprightly, very good to best. Grown in the South and Southwest. January to April.

RED ASTRACHAN. This hardy, early variety is well known. Fruit large, roundish, nearly covered with deep crimson, handsome, juicy, good, highly esteemed on account of its fine appearance, earliness, and hardiness. August.

ROME BEAUTY. Keeps in good condition till May and June. Large, round, mottled and striped in different shades of red. Flavor and quality away above the average. Appearance and size are its valuable points. Always sells and always brings good prices.

Twenty Ounce. Very large; greenish, becoming yellow, mottled and splashed with bright red. Flesh tender and juicy. September.

Early Harvest. Medium to large; pale yellow; fine flavor. Tree a moderate, erect grower, and a good bearer. A beautiful and excellent variety for garden. August.



APPLE, YELLOW TRANSPARENT

10 per cent cash discount. This will in most cases more than pay transportation charges



YORK IMPERIAL

YORK IMPERIAL. Medium to large size, round, irregular, greenish yellow overlaid with bright red; flesh tender, firm, crisp, and high flavor. Tree is a vigorous grower; strong and healthy; an unusually heavy bearer. Other varieties may fail to set fruit and suffer from off years, but York Imperial, with proper cultural methods, will bear consistently from year to year. York Imperial is a wonderful Apple for packing in bushels for the domestic trade; is possibly the largest and best selling variety packed in barrels for the export trade. Its long keeping, long distance shipping qualities, attractive color, and being a heavy cropper established York Imperial the leading commercial Apple for Southern Pennsylvania, Maryland, West Virginia and Virginia.

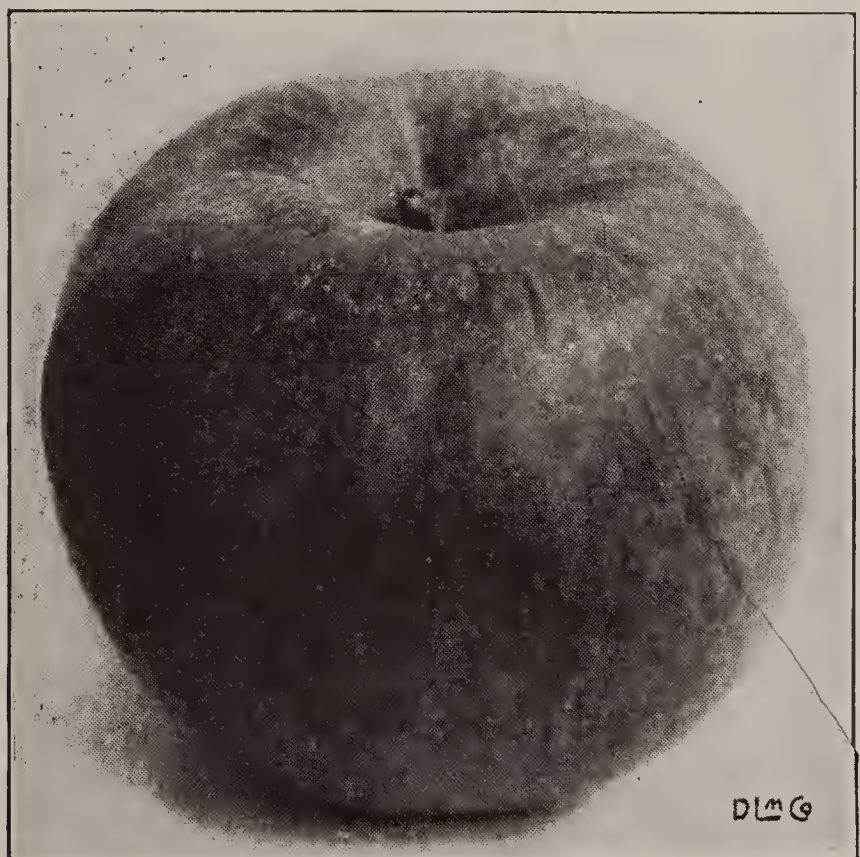
Winter Banana. Perfect in form; golden yellow, and beautifully shaded with bright crimson red. Flesh lemon yellow, fine grained, sub-acid, rich, aromatic flavor, and of the highest quality. January.

Fameuse (Snow Apple). Hardy. Deep crimson. Flesh is snowy white, tender, melting and delicious. One of the finest dessert fruits, and valuable for market. November to January.

STAYMAN'S WINESAP. Fruit medium, large; skin green and yellow, red striped, flesh yellow, firm. Quality excellent.

Tolman Sweet. Season, Winter. Medium to large size; color, light yellow. Flesh, white, firm, rich, and very sweet. Excellent for Winter baking. Keeps well into Spring. November to April.

Cortland. Is as large as that of McIntosh, or larger; round to somewhat conical in shape. In color it is a bright red blushed with darker red, splashed and striped with carmine, and more or less overlaid with a deep purplish bloom. The flesh is white, often with a pinkish tinge, fine, crisp, tender, juicy, sub-acid and aromatic. The trees are large, vigorous, upright-spreading, very hardy.



CORTLAND

BALDWIN. A great market Apple, very productive, of fair, handsome fruit. No variety yields larger crops or bears shipment better, or is more attractive in color, size and shape, than the Baldwin. It is esteemed as an eating Apple, and for cooking. Thousands of barrels of this fruit are exported to England annually. For a commercial orchard it can be relied upon. Large, bright red, crisp, juicy and rich. Tree vigorous, upright and productive.

McINTOSH. Not equaled in quality and flavor by any other variety. Due to its very high quality and its exceedingly attractive appearance, it commands a ready sale and a fancy price in all the large eastern markets. The fruit is very attractive in appearance, of bright, deep red color, which in highly colored specimens is almost purplish red overspread with a thin, lilac bloom. Fruit above medium in size, flesh white, firm, very crisp, fine grained, tender, very juicy. Sprightly sub-acid in flavor, with a characteristic perfume and aroma. Comes into bearing about the fourth year and is a reliable cropper. October to December.

DELICIOUS RED. This Apple is appropriately named for it is of handsome appearance as well as high quality, rivaling Spitzenburg. It is oblong in shape and its bright red and yellow skin is very handsome. This Apple has been largely planted in the Northwest and ranks high in commercial orcharding.

Maiden's Blush. Medium size, flat, quite smooth and fair; pale yellow with beautiful red cheek. Tender, sprightly, pleasant acid flavor. Tree vigorous and productive. September and October.



NORTHERN SPY APPLE



R. I. GREENING APPLE

Golden Russet. Medium to large size, dull russet, with a tinge of red on the exposed side. Flesh greenish, crisp, juicy, and high flavored. Hardy, bears well. November.

RHODE ISLAND GREENING. This large and superior Winter Apple is famous over a large extent of country, and is more highly prized for cooking and eating than any other variety. It is a good keeper but will keep better if picked early.

WEALTHY. This is a beautiful, hardy Winter Apple, originating in Minnesota. Fruit large, roundish; New York, Michigan, etc. It is skin smooth, oily, covered with a dark red. Flesh white, tender, juicy, vinous, sub-acid. Quality very good.

NORTHERN SPY. This variety has long been a favorite in commercial sorts in northern New England. Superior to some other standard varieties in flavor, and quality, and commands top prices. Large, striped and quite covered on the sunny side with dark crimson, and delicately coated with bloom. Juicy, rich, highly aromatic, retaining its freshness of appearance and flavor till July. A remarkably rapid, erect grower, and a great bearer. December to March.

Write Us for Special Prices
on
FRUIT TREES
in
Larger Quantities

New Varieties of Apples

Lobo. Hangs to the trees much better than McIntosh, more attractive, earlier, bright crimson color; flesh white, fine grained, good flavor. October.

Macoun. Dark red, of good size, with white richly flavored flesh, having a pronounced McIntosh aroma. Ripens after Cortland and keeps longer.

Melba. Bright crimson over waxy yellow, large with McIntosh aroma, tender, good for local markets.

Milton. Bright pinkish red; handsome, large; type of McIntosh. Ripens a month earlier.

Red Rome. All the fine qualities of Rome Beauty, except solid red without stripes.

Blood Red McIntosh. Has all of the splendid qualities of McIntosh, its hardiness and wonderful productive qualities add to these features a solid blood red color (almost black). This gives you an idea of the beauty and wonder of this new Apple.

Price for 1 year trees, 4-5 ft., XXX, 75c. each, 10 for \$6.00, 100 for \$55.00

Select Varieties of Dwarf Apples

Like Dwarf Pear trees they come into bearing much earlier than Standard trees. Their low, broad heads are within reach, so that Apples or Pears can be easily picked. You can plant your garden full of dwarf fruit trees and still grow Strawberries and vegetables. With dwarfs some varieties will bear the second year, and will bear a full crop the fourth year.

We can supply the following varieties:

Yellow Transparent
Baldwin
McIntosh
Delicious

Pomona's price for Dwarf Apples

Extra Size trees, 2 yr., 4 to 5 ft., XXX, 70c. each, 10 for \$6.00

Orchard Size trees, 2 year, 3 to 4 ft., XX, 60c. each, 10 for \$5.00

Select Varieties of Dwarf Pears

Dwarf Pear trees often bear the same year planted, and the trees occupy but little room in the garden. They can be planted very closely together and kept headed back. There is scarcely a city or town lot so small that room cannot be found for a few dwarf fruit trees. Their hardiness makes it possible for anybody, anywhere to produce delicious fruits.

We offer the following list of varieties that will succeed as Dwarf trees:

Bartlett	Duchess
Seckel	Anjou
Clapp's Favorite	Keiffer
Flemish Beauty	

Pomona's price for Dwarf Pear

Extra size trees, 2 yr., 4 to 5 ft., XXX, 45c. each, 10 for \$3.50, 100 for \$25.00

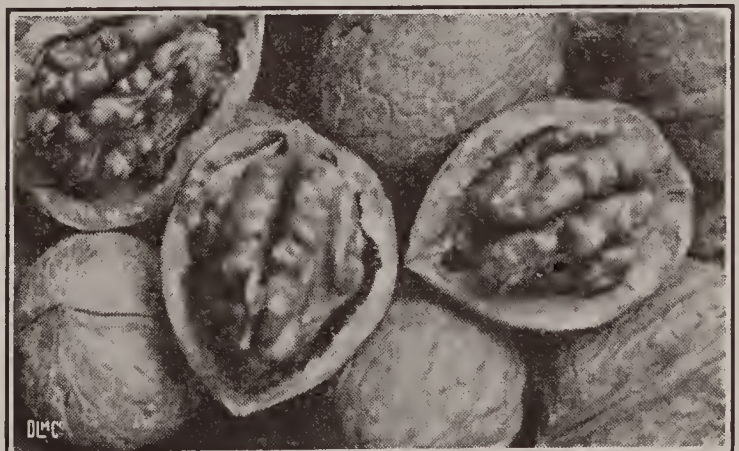
Orchard Size Trees, 2 yr., 3 to 4 ft., XX, 40c. each, 10 for \$3.00, 100 for \$20.00

Walnuts

American Black. The well known variety of Walnut; has very hard shell; meat is very rich. This tree is highly prized for the valuable timber. A good tree to plant. 4 to 5 ft., \$1.00 each, \$8.50 per 10; 3 to 4 ft., 75c. each, \$6.50 per 10.

English. The well known Walnut, easy to crack; meat is sweet and delicious. 4 to 5 ft., \$1.50 each; 3 to 4 ft., \$1.25 each.

Japan. Shell harder than English, kernel sweet and good. 3 to 4 ft., \$1.00 each.



ENGLISH WALNUTS

Pear Trees

The home garden is not complete without Pears and they are a very profitable commercial crop in nearly all parts of the country. Pears will live on a variety of soils, but succeed exceptionally well in a hard, clay soil. Tilling and fertilizing are advisable to a certain extent, but should not be carried far enough to produce too vigorous a growth. The quality of the Pear is much improved by picking before maturity and by proper ripening indoors.

POMONA SPECIAL PRICE FOR ALL VARIETIES PEAR TREES

Size	Age	Height	Caliper	Grade	Each	10	100
Largest Size	2 yr.	5-7 ft.	$\frac{3}{4}$ and up	XXX.....	\$0.60	\$4.50	\$30.00
Medium Size	2 yr.	4-5 ft.	$\frac{5}{8}$ - $\frac{3}{4}$	XX55	4.00	25.00
Smaller Size	2 yr.	3-4 ft.	$\frac{1}{2}$ - $\frac{5}{8}$	X50	3.50	20.00
Largest Size	1 yr.	3-5 ft.	XXX.....	.60	4.25	27.50

Mailing Size: First-class small size 3 ft. trees sent postage paid, 33c. each, 10 for \$2.75

BARTLETT. Large, coloring when fully ripen to waxy yellow and red blush; juicy, melting, highly flavored. The tree bears early and abundantly. May be grown either as dwarf or standard, but succeeds best as standard. Aside from the fact that it bears early, regularly and abundantly, the Bartlett Pear is justly popular on account of its size, beauty and excellence. August and September.

Seckel. Small size; yellowish russet, with red cheek. Flesh whitish, buttery, very juicy and melting. A prolific bearer. September to October.

Kieffer. Large to very large; skin yellow, with a light vermilion cheek. Flesh brittle, very juicy, with a marked musky aroma. Good quality. It is unfortunate that the merits of this fruit have been un-

derestimated from the haste in which it is hurried to market in an immature and often before it has attained the proper size.

ANJOU. For late Fall and early Winter use, there is no better variety. Quality equal to Bartlett. A close second to Bartlett in public favor. Distributes its fruit well, and stands up under a load better than Bartlett.

CLAPP'S FAVORITE. Large size. Pale lemon yellow; flesh fine grained, juicy, melting, rich and buttery, earlier than Bartlett and resembling the Flemish Beauty in growth. A good grower and very productive.

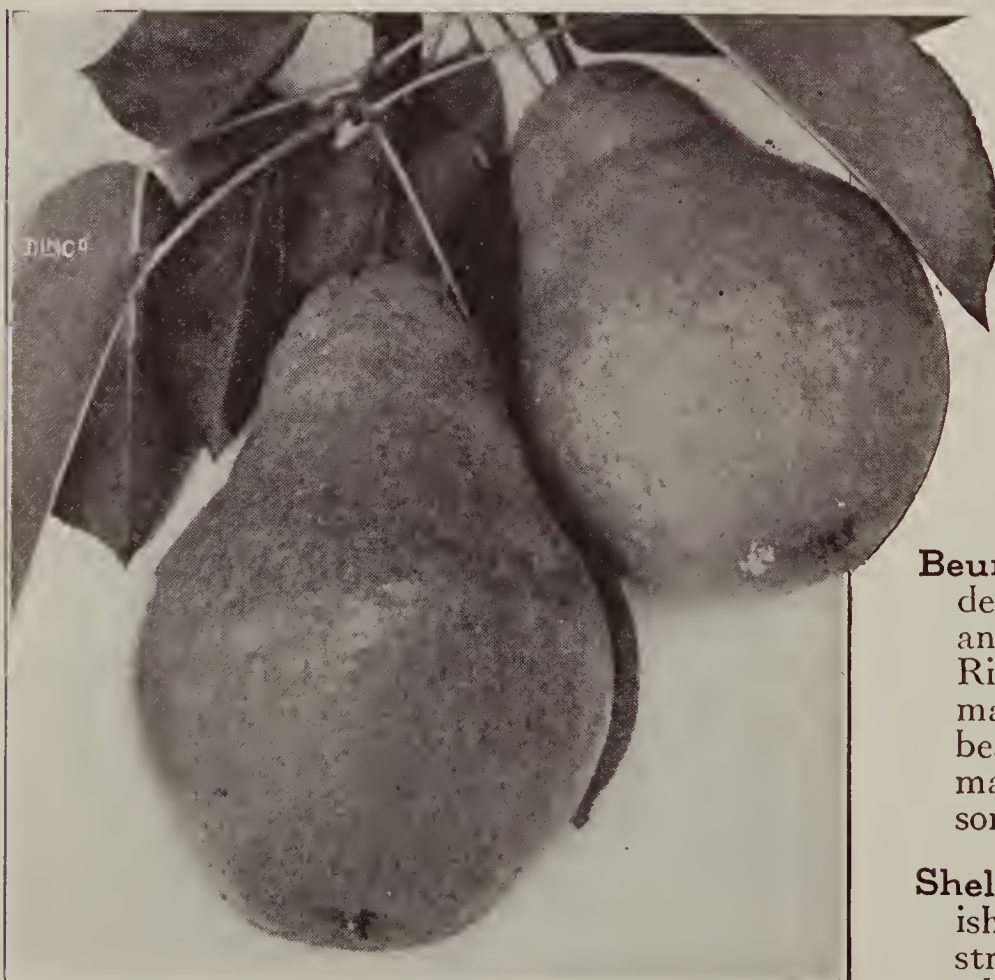
Lawrence. Trees healthy, hardy and very productive. Fruit large; skin yellow, covered with brown spots. Flesh whitish, rich, buttery, and aromatic.

Duchesse d'Angouleme. Very large; of greenish yellow, with patches of yellow and a dull red mostly covered with thin light russet; very juicy, melting, sweet and vinous. October to November.

Wilder. Handsome, melting, sweet, pleasant, with small core, fine grained, tender and juicy. August.

Beurre Bosc. Extra large size; deep russet yellow; high flavored and delicious. It is a favorite. Ripens in October and can be marketed at that time, but for best returns should be kept and marketed during the holiday season.

Sheldon. Large size; roundish; greenish; yellow cheek. A vigorous and strong grower and a good bearer while quite young. October to November.



BARTLETT, KING OF PEARS

Plum and Prune Trees

POMONA SPECIAL PRICE FOR ALL VARIETIES PLUM TREES

Size	Age	Height	Caliper	Grade	Each	10	100
Largest Size	2 yr.	5-7 ft.	3/4 and up	XXX.....	\$0.60	\$4.50	\$35.00
Medium Size	2 yr.	4-5 ft.	5/8-3/4	XX55	4.00	30.00
Smaller size	2 yr.	3-4 ft.	1/2-5/8	X50	3.50	25.00

Mailing Size: First class small size, 3 ft. trees, sent postage paid, 35c. each, 10 for \$3.25

Yellow Egg. Golden yellow covered with thick bloom.

French Prune. Very productive, large size, dark purple, fine flavor. Desirable for home garden.

Reine Claude (Bavay's Green Gage). Roundish, oval, greenish, marked with red in the sun. A great favorite. September.

Felleberg Prune. A fine late Prune; oval, purple; flesh juicy and delicious. September.

NIAGARA. Of large size and first rate flavor. Color dark blue. Good bearer. Not liable to rot. Ripens about August 1st.

RED JUNE. The color is a mottled garnet red overlaid with thin but very distinct and delicate bloom. July.

German Prune. Of medium size; oval; purple or blue. Rich, juicy, fine. Tree vigorous and very productive. September.

Italian Prune. Late. Medium size. Dark purple. Delicious. Fine for drying.

MONARCH. A very handsome, large, rich purple Plum that has attained popularity more quickly than any other Plum of recent introduction. Flesh golden yellow, juicy and sweet. Trees hardy and productive. Ripens in October.

Abundance. Tree bears early in season, being a pinkish red, changing to a darker red, mottled with thin bloom. August.

BRADSHAW. The trees grow large and well formed, bear regularly and heavily. The Plums are large, attractive in appearance, being a light, purplish red changing to dark reddish at maturity, which occurs in July.

Burbank. Is handsomely colored dark red over a yellow ground. It is a very desirable variety for home plantations in New York, bearing early in July.



BRADSHAW, THE LARGEST AND LEADING PLUM

LOMBARD (Purple). A great favorite, as it adapts itself to widely different soils and climates and does well where other varieties would not thrive. Robust, healthy, productive and a regular bearer. Extremely hardy.

YORK STATE PRUNE. A superior strain of the German Prune. The most widely grown of all Plums. In our opinion the most profitable Prune for orchard purposes and a variety that should be in every home garden. It is finely flavored whether eaten out of hand, stewed, or cured as a Prune.

Shropshire Damson. Fruit oval. Tree a good grower, and enormously productive. Fruit of medium size produced in thick clusters of groups. Dark purple color.

All varieties of Prune Trees
5c. per tree higher

Peach Trees

Peach trees are easily cultivated. Their comparative freedom from disease, the short period before they become productive, with the immense demand for the fruit and the facilities with which it may be shipped to distant markets, make Peach growing extremely profitable, and there are few kinds of fruits more highly prized and more keenly relished.

To secure healthy, vigorous and fruitful trees, the ground must be kept clean and mellow and it should receive an occasional dressing of wood ashes. It should be remembered that Peaches are all borne on wood of the previous season's growth, and that this makes it absolutely necessary to prune the trees yearly, to remove dead branches and let in light and air, and keep the trees in good shape to produce bearing wood.

POMONA SPECIAL PRICE FOR ALL VARIETIES PEACH TREES

Size	Age	Height	Caliper	Grade	Each	10	100
Largest Size	1 yr.	4-5 ft.	9/16 and up	XXX.....	\$0.50	\$4.00	\$27.50
Medium Size	1 yr.	3-4 ft.	7/16-9/16	XX45	3.50	22.50
Smaller Size	1 yr.	2½-3 ft.	5/16-7/16	X40	3.00	17.50

Mailing Size: First class small size, 2-2½ ft. trees sent postage paid, 25c. each, 10 for \$1.95, 100 for \$9.50

CHAMPION. Tree and fruit buds extremely hardy. Has stood eighteen degrees below zero, and produced a full crop the following Summer. The flavor is delicious, sweet, rich, and juicy. Skin creamy white with red cheek.

NIAGARA PEACH. The fruit of the Niagara Peach is much like that of Early Crawford in appearance, being large, oval, yellow with brilliant red cheeks. The flavor is rich and piquant, reminding one of the very best Peaches he ever ate. Season medium early.



CHAMPION, THE HIGHEST QUALITY WHITE PEACH

J. H. HALE (Yellow, Free-stone). A notable variety of recent introduction, unusually large in size of fruit and very handsome. Largely advertised as a rival to Elberta for commercial honors, but reported in many sections as not prolific enough to compete with that grand old variety. Of a deep golden yellow color overlaid with bright carmine. Flesh firm, fine grained and good in quality.

CRAWFORD'S LATE. Of large size; skin yellow or greenish yellow, with dull red cheek; flesh yellow. Tree vigorous; moderately productive. One of the finest late sorts.

SOUTH HAVEN. Another successful introduction better than average size, globular, prolific, with dependably recurring crops. Its meat is yellow, juicy and deliciously sweet; the showy exterior an attractive ripe yellow with one red blotch. September 1.

Peach Trees—Continued

ROCHESTER (Yellow, Freestone).

A remarkable new early Peach, which seems to combine the high quality of the Early Crawford with the productiveness of the Elberta. Coming into the market as it does about two weeks ahead of Early Crawford, it commands not only the highest price but a ready sale. An early bearer, often producing fruit the year after planting. The fruit is large, yellow mottled with red in color, with thick, firm, juicy flesh, rich and sweet in flavor. The trees are hardy, vigorous and productive. Ripens here the middle of August.



ROCHESTER PEACH

CRAWFORD'S EARLY. A magnificent large yellow Peach of good quality. Tree vigorous and prolific; its size, beauty and productiveness make it one of the most popular varieties. Season beginning of September. This valuable Peach has long been a favorite for large size, beauty and quality of fruit. Most people when they buy Peaches ask for Crawford's.

EARLY ELBERTA. Ripens about a week to ten days earlier than Elberta. Yellow, freestone, large, somewhat similar to Elberta, but a trifle better flavor. Excellent home orchard Peach.

Carman. A very hardy Peach, ripening at same time as Early Rivers, yet almost as large as Elberta. Skin pale yellow with blush on sunny side. Flesh white, tender, sweet and melting. Ships well. August.

Fitzgerald. Fully equal to Crawford's Early in size, quality and color. A very early bearer, hardy, succeeding in Canada and in Michigan perfectly. Fruit large, brilliant yellow with red cheek. Highest quality.

Belle of Georgia. Large. White, with red cheek. Flesh white, firm and of excellent flavor. Tree very productive. Early July.

Beer's Smock. Large, yellow, with red cheek. Flesh yellow and of the very best quality for the season. A regular and enormous bearer, making it very desirable for market purposes.

ELBERTA. A valuable, large Peach of good quality. The best orchard variety, and valuable also for planting in the garden. Elberta is hardier in bud than many varieties; therefore a more uniform cropper. Elberta is large, yellow, with red cheek, juicy and high-flavored. Flesh yellow. Freestone. Season medium early.



ELBERTA PEACHES

Nectarines

The Nectarine has size and a smooth skin like the Plum, and requires the same treatment. It is like the Peach in other ways and requires the same culture. The melting, juicy texture of the Nectarine and its delicious flavor, furnish one of the most delightful fruit eating episodes of the early Autumn.

SURE CROP. Attractive dark red, large, handsome, flesh white; freestone, high quality.

HUNTER. Handsomely colored with red, medium, yellow flesh; freestone, good quality.

Price of Nectarines:

	Each	10
4 to 5 ft.....	\$0.95	\$8.50
3 to 4 ft.....	.75	6.50

Pomona Sour Cherry Trees

We consider Cherry orchards the most profitable of any fruit. The trees begin to bear two years after planting, growing rapidly so that in a short time you are able to realize handsomely on them. By arranging varieties the time of ripening can be lengthened out through June, July and August, thus enabling the planter to harvest the crop to best advantage.

POMONA SPECIAL PRICE FOR ALL SOUR VARIETIES CHERRIES

Size	Age	Height	Caliper	Grade	Each	10	100
Largest Size	2 yr.	5-6 ft.	3/4 and up	XXX.....	\$0.45	\$3.00	\$20.00
Medium Size	2 yr.	4-5 ft.	5/8-3/4	XX35	2.50	15.00
Smaller Size	2 yr.	3-4 ft.	1/2-5/8	X30	2.00	10.00

Mailing Size: First class small size 3 ft. trees sent postage paid, 30c. each, 10 for \$2.35

MONTMORENCY (Large). The most popular of all hardy Cherries for market and home use. This Cherry is planted largely in all parts of the country. The fruit is in great demand by canning factories and others, and sells at fancy prices. It is of large size, light red in color, stem rather short. The tree is very hardy and a vigorous grower. The trees bear fruit soon after planting.

Dyehouse. A very early and sure bearer. For tarts, pies and canning it has no equal for home use. June.

EARLY RICHMOND. One of the most valuable and popular Cherries. Unsurpassed for cooking purposes. It is the good old variety that yields such marvelous crops in the gardens. The most hardy of all varieties, uninjured by the coldest Winters. Tree slender in growth, with a roundish spreading head, exceedingly productive. Ripens through June.

Wragg. A Russian variety. One of the hardest Cherries. Vigorous and productive. Medium size, dark purple, fine quality and has produced annual crops at the northernmost limit.

Ostheim. Very hardy, fruit large, and roundish. Flesh is liver colored, tender, juicy and almost sweet. Quality good.

May Duke. Large red; juicy and rich. An old, excellent variety. Vigorous, productive. June 15.

ENGLISH MORELLO. Without doubt one of the most valuable of this class. English Morello is late and much liked by canning establishments. One of the safest Cherries to plant.

All varieties of Cherry trees on Mazzard roots, 10c. per tree higher



CHERRIES, EARLY RICHMOND

Gasport, N. Y.,
December 13, 1933

Pomona United Nurseries:

I ordered and planted 400 Peach Trees from you last Spring, all of which grew but one. They made a wonderful growth and were very satisfactory.

Very truly yours,

C. WARREN SILSBY

Pomona Sweet Cherry Trees

Bing. One of the most delicious Sweet Cherries grown. Tree very hardy and vigorous. Fruit is large, dark brown or black and of very fine quality.

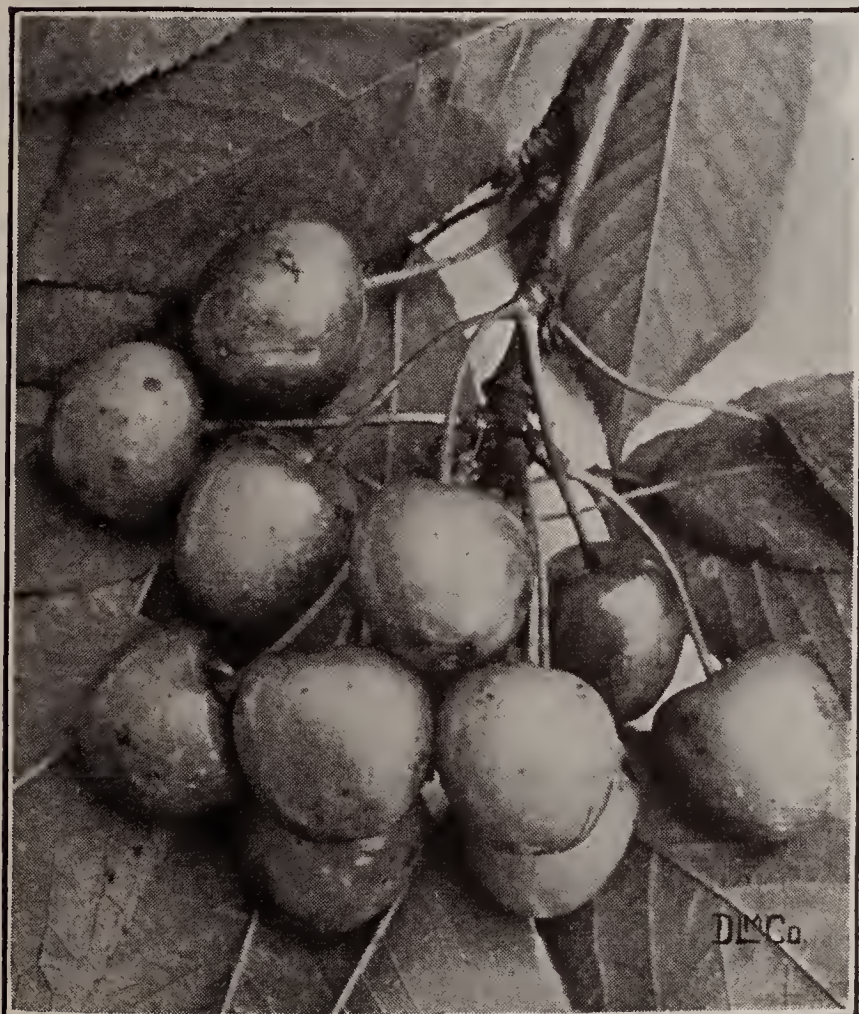
BLACK TARTARIAN (Black Oxheart). Very large. Bright purplish black. Half tender; juicy. Very rich. Tree a remarkably vigorous and erect grower, and an immense bearer. Ripe last of June.

Yellow Spanish. Large, sweet, yellow with red tinge. One of the most beautiful and popular of the light colored cherries.

Windsor. Fruit large; liver colored, resembling the Elkhorn. Ripening in a few days after that variety. Flesh remarkably firm, of fine quality. Tree hardy and prolific. Vigorous. Middle of July.



MONTMORENCY CHERRIES



NAPOLEON CHERRIES (WHITE OXHEART)

NAPOLEON CHERRY (White Oxheart). Fruit very large, oblong, pale yellow, with a bright red cheek in the sun. Flesh very hardy, brittle, reddish at stone, juicy and sweet. Tree a vigorous and erect grower. Very productive. Early in July.

Gov. Wood. One of the best. Clear, light red. Tender and delicious. Tree vigorous and productive. End of June.

Schmidt's Bigarreau. Black; Flesh dark; firm. Very productive. Is one of the best firm fleshed Cherries of the largest size. July.

PLANT MORE CHERRIES

In this day many a housewife does not secure the quantity of Cherries she would like for family use.

POMONA SPECIAL PRICE FOR ALL SWEET CHERRY TREES

Size	Age	Height	Caliper	Grade	Each	10	100
Largest Size	2 yr.	5-7 ft.	3/4 and up	XXX.....	\$0.55	\$4.00	\$30.00
Medium Size	2 yr.	4-5 ft.	5/8-3/4	XX50	3.50	25.00
Smaller Size	2 yr.	3-4 ft.	1/2-5/8	X45	3.00	20.00
Largest Size	1 yr.	3-5 ft.	XXX.....	.55	3.75	27.50
Mailing Size: First class small size 3 ft. trees sent postage paid, 33c. each, 10 for \$2.75							

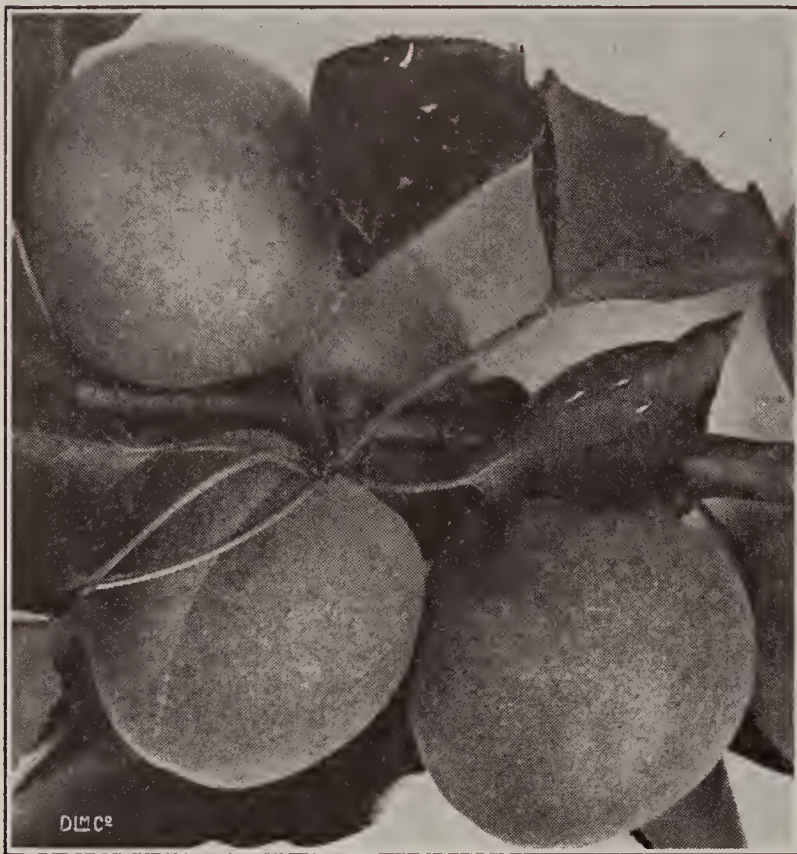
Select Varieties of Apricots

The leading characteristics of the Apricot are extreme hardiness, early bearing, productiveness, and freedom from disease. Every garden should have one or more trees. In the selection of choice garden fruits it is quite indispensable.

POMONA SPECIAL PRICE FOR ALL VARIETIES OF APRICOTS

		Each	10
Large Size	3 to 4 ft.....	\$0.50	\$4.00
Smaller Size	2½ to 3 ft.....	.30	2.75

Mailing Size Trees: 2 to 3 ft. high, sent postpaid, 25c. each, 10 for \$2.25



APRICOT—EARLY GOLDEN

Early Golden. Pale orange, juicy and sweet. It is a hardy, prolific bearer. Ripens first of July.

Moorpark (Summer). Early, yellow, with red cheek. Juicy, sweet, rich freestone. Very productive. A European variety.

Gibb. Tree hardy, grows symmetrical, productive. Fruit medium, yellowish, sub-acid, juicy and rich. The best early variety, ripening soon after Strawberries. Last of June.

J. L. Budd. Tree a strong grower and profuse bearer. Fruit large, white with red cheek. Sweet, juicy. The best late variety.

Montgamet. Deep yellow. One of the best for preserving. Sub-acid and of good quality. Tree vigorous and productive.

Quince

POMONA SPECIAL PRICE FOR ALL VARIETIES OF QUINCES

Size	Age	Height	Caliper	Grade	Each	10	100
Largest Size	2 yr.	4-5 ft.	5/8 and up	XXX.....	\$0.60	\$4.50	\$35.00
Medium Size	2 yr.	3-4 ft.	1/2-5/8	XX55	4.00	30.00

Mailing Size: First class small size 3 ft. trees sent postage paid, 35c. each, 10 for \$3.25

Reas Mammoth. Large size; very productive; superb market sort.

Meech's Prolific. The most prolific of all known varieties. Ripens between the Orange and the Champion. Bears very early, usually a full crop at three years. Quality unsurpassed.

Bourgeat. A new, golden prolific variety of the best quality. Tree a remarkably strong grower, surpassing all others, yielding immense crops. Fruit of largest size, round, rich golden color. Smooth, very tender when cooked.

Champion. Fruit very large, fair and handsome. Tree very handsome, surpassing other varieties in this respect. Bears abundantly while young. Flesh cooks as tender as an Apple and without hard spots or cores. Flavor delicate, imparting an exquisite Quince taste.

Orange. Large, roundish; bright golden yellow. Cooks tender and is of very excellent flavor. Valuable for preserves or flavoring. Very productive. The most popular and extensively cultivated of the old varieties. October.

Strawberries

SENATOR DUNLAP. A well tested, early variety. One of the safe sorts to plant everywhere. Fruit good size, regular form, beautiful bright red, glossy, firm, splendid keeper and shipper. Excellent quality. One of the best for canning.

CORSICAN. Is a great Strawberry for many reasons. First, it is the biggest berry; second, it is the brightest and best in color; third, it is a great yielder, and producer; fourth, and the most important of all, the foliage is exceedingly vigorous and leathery.



STRAWBERRIES, CORSICAN

PREMIER. Early to late. Noted for its long fruiting season. Ripens with the early varieties and continues fruiting until late varieties come in. It is adapted to all sections of the country. No weakness of any kind. Fruit large to very large and holds its size well through ripening season.

Note—Do not order Strawberry plants sent by freight. Our patrons order from 50 to 500 trees, and 500 or more Strawberry plants by freight. Now the trees should go by freight and the Strawberries by express, or small lots by mail. In all cases when desired by mail, add postage at rate of 20c. per 100. Always state plainly when the Strawberry plants are to be sent by express or mail.

PRICES FOR ALL VARIETIES OF STRAWBERRIES (BY EXPRESS)

25 for 85c., 100 for \$1.25, 1000 for \$9.00. If ordered by mail, 25 for 95c., 100 for \$1.45

Currants

The Currant is one of the most productive and best paying small fruit that we have. There is, we believe, more profit to the acre in Currants than in any other small fruit.

WILDER (Red). Very large; deep red; bunches long. Plants erect, stout, vigorous and productive.

RED CROSS. A strong growing variety. Cluster long; berry medium to large, bright red; quality good to best. Very productive.

Fay's Prolific (Red). A cross between Cherry and Victoria. Of large size, fine flavor and claimed to be twice as prolific as the Cherry.

Prices for all varieties of Currants:
2 yr. bushes, 30c. each, 10 for \$2.50,
100 for \$15.00

Gooseberries

Plant in good rich soil and give a liberal dressing of manure every season. Regular pruning every year is essential for the production of fine fruit.

HOUGHTON. Small to medium; roundish, oval, pale, sweet, tender, very good. Plants spreading; shoots slender. 2 yr. bushes, 40c. each, 10 for \$3.50.

DOWNING. Large, handsome pale green, and of splendid quality for both cooking and table use. Bush a vigorous grower. 2 yr. bushes, 40c. each, 10 for \$3.50.

Currant and Gooseberry bushes, by mail add 3c. to each bush ordered

Rhubarb (Pieplant)

The first thing in the Spring to furnish material for pie and sauce. Its health giving tonic properties make it invaluable as a Spring regulator. Easy to grow. Should be in every home garden. Plant in rows 4 feet apart with roots 3 feet apart in row.

Myatt's Linnaeus. The best variety for general use. Stems large, tender and of refined flavor. Yields abundantly. Strong, 2 yr. roots, 10c. each, 10 for 85c., 100 for \$7.00.



NEW LATHAM RASPBERRIES (Greatly reduced)

Raspberries

PRICE, ALL VARIETIES OF RED AND BLACK RASPBERRIES

Strong No. 1 Plants: 10 for 75c., 25 for \$1.00, 100 for \$3.00, 1000 for \$25.00

If ordered by mail, postpaid, 10 for 85c., 25 for \$1.35, 100 for \$3.75

Black Varieties

KANSAS. Largest size, strong, vigorous grower, hardy, bearing immense crops. Size of Gregg.

Cumberland. Plants vigorous, hardy and productive; fruit large. Midseason.

Gregg. Plants vigorous, hardy and productive; fruit above medium to very large.

PLUM FARMER. Berry large and very productive; a great favorite in Western New York. A fine picker and one of the best market sorts.

Red Varieties

LATHAM. Ripens with the earliest and hangs to the last. Immensely productive and a fine shipper. Very hardy and does not sucker nearly so much as other red Raspberries.

CHIEF. This variety is very hardy and can be successfully grown in cold climates. Fruit is large and has a very fine flavor. Produces more fruit per acre than some other varieties. Chief is mosaic proof.

St. Regis Everbearing. A wonderful variety of Red Raspberry, bears fruit the first season, bears for four months, beginning about June 15th. The second crop of berries is borne on the ends of the new canes and ripens about the middle of August and continues until frost.

CUTHBERT. Large, conical; deep rich crimson; firm, of excellent quality. Vigorous grower, entirely hardy and immensely productive. The best Raspberry for general culture.

Purple Varieties

COLUMBIAN. Very large, often an inch in diameter; adheres firmly to stem and will dry on the bush if not picked. Very large, dark reddish purple, rich, juicy and delicious. 10 for 85c., 25 for \$1.25, 100 for \$4.00, 1000 for \$30.00.

Asparagus

Conover's Colossal. This variety is superior in size and quality, remarkably tender and fine flavored.

New Washington Asparagus. It is the finest of the large type Asparagus. Its quick growing habit makes it extremely tender. It is vigorous in growth.

PALMETTO. Of Southern origin. Very large and productive. Most extensively used Asparagus.

Price for Asparagus: 2 yr. roots, 25 for 85c., 100 for \$2.25, 1000 for \$13.00

Don't BUY Berries, GROW Them—It is a pleasure, as well as economy, to "grow your own berries." Big, beautiful and temptingly fresh fruits right out of your own garden. Fresh, ripe berries are a most economical luxury when you grow them yourself.

Blackberries

This profitable fruit should be planted for garden use in rows 5 feet apart, with plants 3 feet apart in rows. For market, in rows 6 feet apart, with plants 3 feet apart in the rows. Give the plants the same cultivation as for Raspberries.

Blower. Large size, jet black, good shipper, best quality, unexcelled productiveness are the main characteristics of this splendid new sort.

Minnewaska. Wonderful, hardy, productive, good Blackberry, has not been forgotten by us, or our old patrons. Its principal points are hardiness, excellent quality, earliness, and continued bearing and productiveness.

SNYDER. Extremely hardy; enormously productive; medium size.

Agawam. Ripens earlier than other kinds, and has a flavor similar and equal to the wild berry. Very hardy.

ELDORADO. The best all-round berry yet produced, combining nearly all the good qualities found in a Blackberry. The vines are very hardy and vigorous, enduring the Winters of the far Northwest without injury and their yield is enormous. The berries are large, jet black, borne in large clusters and ripen well together; they are very sweet, melting, have no hard core and keep for eight or ten days after picking.

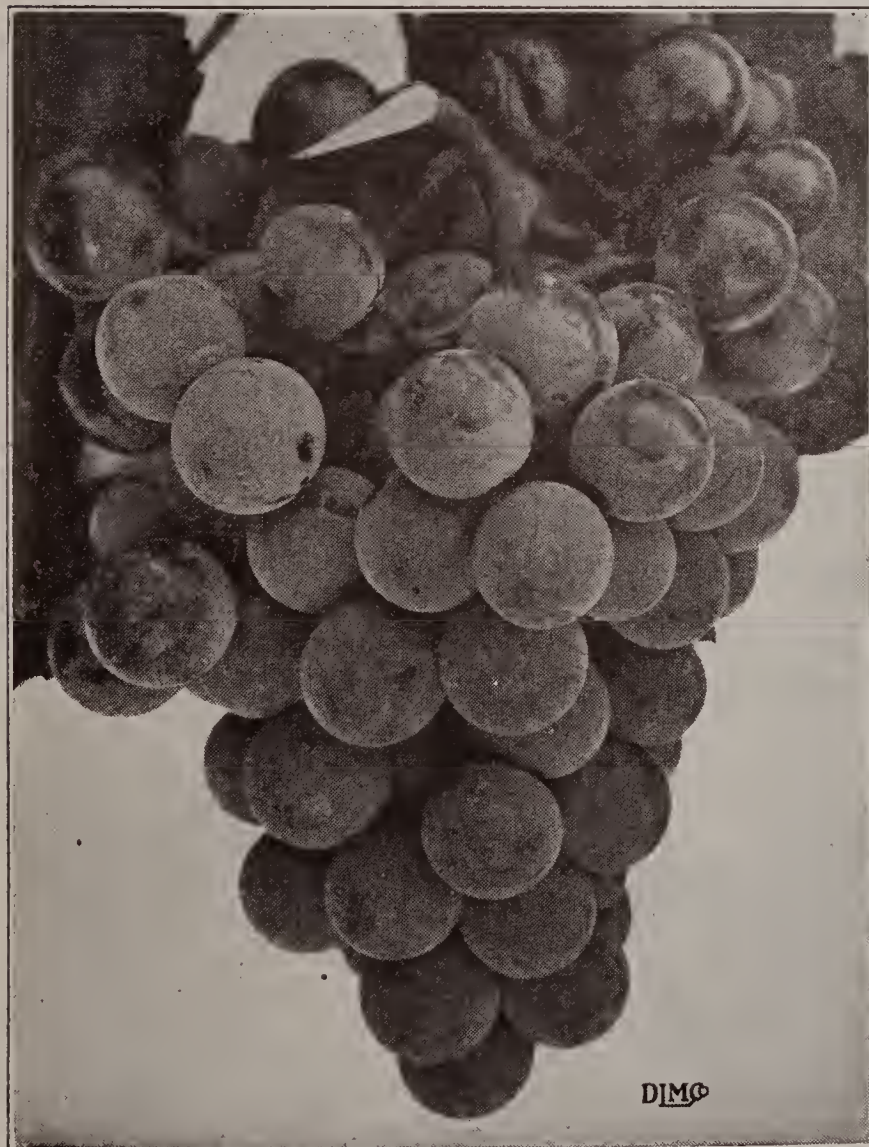
PRICES FOR ALL VARIETIES OF BLACKBERRIES

Strong, No. 1 Plants: By express, 10 for 75c., 25 for \$1.00, 100 for \$3.00, 1000 for \$30.00
By mail, postpaid, 10 for \$1.00, 25 for \$1.50, 100 for \$4.50

Grapes

Concord. Black. Bunch large, shouldered, compact; berries large, covered with a rich bloom, skin tender, but sufficiently firm to carry well to distant markets. Flesh juicy, sweet, pulpy, tender. Vine a strong grower, very hardy.

NIAGARA WHITE. Occupies the same position among the white varieties as Concord among the black; the leading profitable market sort. Bunch and berries large, greenish white changing to pale yellow when fully ripe.



CONCORD GRAPES

Agawam.....	Red
Brighton.....	Red
Catawba.....	Red
Caco.....	Red
Chas. A. Green.....	White
Delaware.....	Red
Salem.....	Red
Moore's Diamond.....	White
Moore's Early.....	Black
Pocklington.....	White
Worden.....	Black

PRICE FOR ALL VARIETIES OF GRAPES (Except Concord)

Strong, 2 yr. vines, 30c. each,
10 for \$2.00, 100 for \$12.00

Concord, 2 yr. No. 1, 25c. each,
10 for \$1.50, 100 for \$8.00

Mailing size, 2 yr. Grape Vines, add
2c. to each vine to cover mailing

Special Grape Collection No. 25

10 Strong, 2 yr. Vines for \$1.45

2 Worden	3 Concord
3 Niagara	2 Salem (red)

10 Strong 2 yr. Vines by express,
for \$1.45; 10 Vines by mail, \$1.60

Ornamental Climbing Vines

Hall's Japan Honeysuckle, 2 yr. \$0.50 each
 Ampelopsis veitchi, 2 year.50 each
 Clematis henryi, 2 year.75 each

Clematis jackmani, 2 year. \$0.75 each
 Clematis paniculata, 2 year.35 each
 Wisteria Purple, 2 year.50 each



PEONY, FESTIVA MAXIMA

Peonies

Strong Clumps, 35 cents each,
 10 for \$3.00

You surely should have Peonies in your garden, for no other flower approaches them for hardiness, freedom of bloom, fragrance, usefulness as cut flowers, and immunity from attacks of insects and disease.

Dorchester. Salmon pink. Double. Dwarf, compact grower. Flowers very full.

Eudulis Superba. Soft pink. Double. Strong upright grower. Fragrant.

Festiva Maxima. Pure white, flecked with carmine. Large. Free flowering.

Louis Van Houtte. Dark crimson. Semi-double. Fragrant.

Queen Victoria. Creamy white, carmine spots. Free blooming. Fragrant.

Rubra Triumphans. Dark crimson. Large. Semi-double.

Bearing Age Fruit Trees

We have calls from our patrons for extra size bearing age trees which will fruit two years after planting. To meet this demand we are offering below varieties that we have growing at this time. These trees are four and five years old, 7 feet and up, well developed, and strictly first class in every way.

List of Varieties

APPLES

McIntosh Delicious York Imperial Cortland N. W. Greening

PEARS

Bartlett Seckel

PLUMS

German Prune Lombard

CHERRIES

Montmorency

Black Tartarian

Napoleon

PRICE OF BEARING AGE TREES

7 feet and up, \$1.85 each, 10 for \$15.00



POMONA BARGAIN COLLECTIONS

Selected for Every Home Garden

You will never know the highest satisfaction of fruit until you eat it fresh—picked, fully ripe out of your own garden, hence reason for making up these **Special Low Priced Collections** to encourage home planting.

Apple Tree Collection - No. 1

6 Selected Varieties from Early Summer to Late Winter

- 2 Yellow Transparent
- 1 McIntosh
- 1 Cortland
- 1 York Imperial
- 1 Delicious
- 6 2-year trees, 6 to 7 feet high
- Catalogue Price.....\$3.60
- Special Low Price . \$2.70**

Peach Tree Collection - No. 4

6 Selected Varieties from Early to Late

- 2 Champion
- 1 Rochester
- 1 Hale
- 2 Elberta
- 6 Trees, 5 to 6 feet high
- Catalogue Price.....\$3.00
- Special Low Price . \$2.10**

Pear Tree Collection - No. 5

6 Selected Varieties from Early Summer to Late Winter

- 1 Clapp's Favorite
- 2 Barlett
- 1 Seckel
- 1 Sheldon
- 1 Bosc
- 6 2-year trees, 6 to 7 feet high
- Catalogue Price.....\$3.60
- Special Low Price . \$2.70**

Plum Tree Collection - No. 6

6 Selected Varieties

- 1 Fellenberg
- 1 Bradshaw
- 1 Monarch
- 1 Shipper's Pride
- 1 Lombard
- 1 Reine Claude
- 6 2-year trees, 6 to 7 feet high
- Catalogue Price.....\$3.60
- Special Low Price . \$2.70**

Home Garden Assortment of Selected Varieties Collection No. 10

- | | | |
|----------------------------|---------------------|------------------------|
| 1 Yellow Transparent Apple | 1 Bosc Pear | 1 Reine Claude Plum |
| 1 Cortland Apple | 1 South Haven Peach | 1 Black Oxheart Cherry |
| 1 York Imperial Apple | 1 Elberta Peach | 1 Montmorency Cherry |
| 1 Bartlett Pear | 1 Bradshaw Plum | 1 White Oxheart Cherry |

12 Largest size 6 to 7 foot trees—The best for home garden **12**
 Regular catalogue price, \$6.75
Special Low Price . . . \$4.98

Home Garden Cherry Collection—No. 7

10 Cherry Trees, 5 to 7 feet high

- | | | | |
|-----------|------------------|-------------------|---------------|
| 10 | 6 Montmorency | 1 English Morello | \$1.98 |
| | 1 Early Richmond | 1 Black Oxheart | |
| | 1 White Oxheart | | |

All Varieties Are the Best for Home Planting

When ordering these Special Collections please order by number.

POMONA UNITED NURSERIES ❖ DANSVILLE, N. Y.



BARTLETT PEAR

POMONA
FRUIT
TREES



MONTMORENCY CHERRY



YELLOW TRANSPARENT APPLE

GROWN AT
DANSVILLE
New York



CATAWBA



CONCORD



NIAGARA